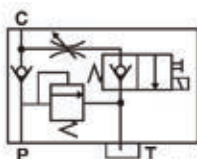


LV Cartridge Solenoid Check Lift Valves



Symbol



20-OM

Specification

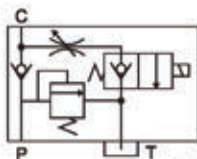
LV-20A73T-20-OM- ※

Normally closed-NC		Max. flow	Rated flow	Max.pressure kgf/cm ²	Operating temperature range	Weight (kg)
NC	NO	20 L/min (5.3 G.P.M)	15 L/min (4 G.P.M)	250	-20℃ ~ 120℃	0.93(2.0) including coil
20						

★ OM: With manual



Symbol



20

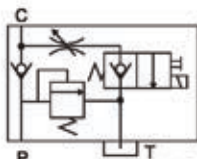
Specification

LV-20A74T-20- ※

Normally closed-NC		Max. flow	Rated flow	Max.pressure kgf/cm ²	Operating temperature range	Weight (kg)
NC	NO	20 L/min (5.3 G.P.M)	15 L/min (4 G.P.M)	250	-20℃ ~ 120℃	1.05(2.3) including coil
20						



Symbol



20-OM

Specification

LV-20A74T-20-OM- ※

Normally closed-NC		Max. flow	Rated flow	Max.pressure kgf/cm ²	Operating temperature range	Weight (kg)
NC	NO	20 L/min (5.3 G.P.M)	15 L/min (4 G.P.M)	250	-20℃ ~ 120℃	1.05(2.3) including coil
20						

★ OM: With manual