

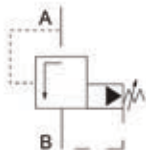
SBG Low Noise Type Pilot Operated Relief Valves



How to order

| SB | G | -03 | B | L |
|--------|--------------------|------------------------------------|---|---|
| Series | Type of connection | Valve size | Pressure adj.range | Handle position |
| | G: Sub-plate type | 03: 3/8" 06: 3/4" 10: 1 1/4" | B: 10-70kgf/cm ² C: 35-140kgf/cm ² H: 70-250kgf/cm ² | L: standard left side (view from gauge) R: right side |

Symbol



Specification

| Model | Max.operated pressure (kgf/cm ²) | Pressure adjusting range (kg/cm ²) | Rated flow (L/min) | Weight (kg) |
|----------------|--|--|--------------------|-------------|
| Sub-plate type | | | | |
| SBG-03 | 250 | B: 10-70 | 100 | 4.1 |
| SBG-06 | | C: 35-140 | 200 | 5.4 |
| SBG-10 | | H: 70-250 | 400 | 11.3 |