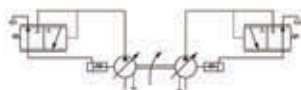


## VVP Variable Displacement Double Vane Pumps



### Specification

Symbol



Model	Max. pressure (kgf/cm <sup>2</sup> )	Flow (L/min) (1800r.p.m,3.5kgf/cm <sup>2</sup> )		Pressure adjusting range(kgf/cm <sup>2</sup> )		Speed (rpm)		Weight (kg)
		Shaft end pump	Cover end pump	Shaft end pump	Cover end pump	Max.	Min.	
VVP3-20/20-※/※-10	140	20	20	A: 15 - 35 B: 20 - 70 C: 50 - 105 D: 70 - 140		1800	800	25
VVP3-30/30-※/※-10		30	30					
VVP3-40/40-※/※-10		40	40					

## VVP Variable Displacement Double Vane Pumps



### Specification

Symbol



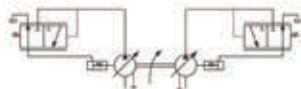
Model	Max. pressure (kgf/cm <sup>2</sup> )	Flow (L/min) (1800r.p.m,3.5kgf/cm <sup>2</sup> )		Pressure adjusting range(kgf/cm <sup>2</sup> )		Speed (rpm)		Weight (kg)
		Shaft end pump	Cover end pump	Shaft end pump	Cover end pump	Max.	Min.	
VVP4/3-70/20-※/※-10	140	70	20	A: 15 - 35 B: 20 - 70 C: 50 - 105 D: 70 - 140		1800	800	40
VVP4/3-70/30-※/※-10		70	30					
VVP4/3-70/40-※/※-10		70	40					

## VVP Variable Displacement Double Vane Pumps



### Specification

Symbol



Model	Max. pressure (kgf/cm <sup>2</sup> )	Flow (L/min) (1800r.p.m,3.5kgf/cm <sup>2</sup> )		Pressure adjusting range(kgf/cm <sup>2</sup> )		Speed (rpm)		Weight (kg)
		Shaft end pump	Cover end pump	Shaft end pump	Cover end pump	Max.	Min.	
VVP4-54/54-※/※-10	140	54	54	A: 15 - 35 B: 20 - 70 C: 50 - 105 D: 70 - 140		1800	800	55
VVP4-70/70-※/※-10		70	70					
VVP4-80/80-※/※-10		86	86					