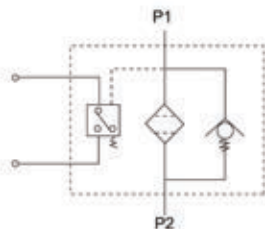


RFB Tank Mounted Return Filters



Symbol



How to order

RFB	-25	x 20	-Y
Series	Nominal flow (L/min)	Filtration mesh (µm)	Indicator Y: With CYB-I indicator < DC24V C: With CY-II indicator < 220V Without indicator

Specification

Model	Nominal flow L/min	Filtration mesh µm	Nominal press. MPa	Press. loss		Indicator		weight kg	Model of element			
				Open	Max.	V	A					
RFB-25 x *L- $\overset{C}{\underset{Y}{\sim}}$	25	1	< 0.075	1.6	0.35	12	2.5	4.6	FAX-25x*			
RFB-40 x *L- $\overset{C}{\underset{Y}{\sim}}$	40							4.8	FAX-40x*			
RFB-63 x *L- $\overset{C}{\underset{Y}{\sim}}$	63							5.3	FAX-63x*			
RFB-100 x *L- $\overset{C}{\underset{Y}{\sim}}$	100							6	FAX-100x*			
RFB-160 x *L- $\overset{C}{\underset{Y}{\sim}}$	160							5	24	2	6.7	FAX-160x*
RFB-250 x *L- $\overset{C}{\underset{Y}{\sim}}$	250							10	36	1.5	12.3	FAX-250x*
RFB-400 x *L- $\overset{C}{\underset{Y}{\sim}}$	400							20	220	0.25	14.7	FAX-400x*
RFB-630 x *L- $\overset{C}{\underset{Y}{\sim}}$	630							30			17.3	FAX-630x*
RFB-800 x *L- $\overset{C}{\underset{Y}{\sim}}$	800										18.6	FAX-800x*
RFB-1000 x *L- $\overset{C}{\underset{Y}{\sim}}$	1000										21.3	FAX-1000x*
RFB-1300 x *L- $\overset{C}{\underset{Y}{\sim}}$	1300					FAX-1300x*						