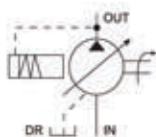


V15-V70 Variable Displacement Piston Pumps



Symbol



How to order

V	18	A	1	R	-
Series Variable displacement piston pumps	Delivery (L/min) Refer to specification	Control type Refer to below table	Pressure adjusting range 1: 8-70kgf/cm ² 2: 15-140kgf/cm ² 3: 20-210kgf/cm ² 4: 20-250kgf/cm ²	Rotation (view from shaft end) R: CW L: CCW	Connection key -: Flat key S: Tooth spline key

Specification

Model	Max. operated pressure (kgf/cm ²)	Disp. (L/min)	Flow (L/min)		Pressure adjusting range (kgf/cm ²)	Speed (rpm)		Weight (kg)
			1500rpm	1800rpm		Max.	Min.	
V15	250	15.0	22.5	27.0	1: 8 - 70	1800	500	11.5
V18	250	17.8	26.7	32.0				
V23	250	23.0	34.5	41.4	2: 15 - 140			
V38	250	37.8	56.7	68.0	3: 20 - 210			
V50	140	51.5	77.2	92.7	4: 20 - 250			
V70	140	69.7	104.5	125.4			55.0	

Pump control types

Type	A pressure compensator control	B multi-stage flow & single-stage pressure control type (with cylinder)	C 2-stage pressure & flow control type	D solenoid controlled pressure compensator type with unloading device	E dual pressure control by solenoid operated valve
Curve					
Curve					
Type	F 2 flow-2 pressure p.c. by solenoid operated valve	G remote pressure compensator control	H power matching control	HJ load sensing & proportional electro-hydraulic pilot relief valves	HK proportional electro-hydraulic load sensing type
Curve					
Curve					